

# Human Claudin 4 Protein-VLP

Cat. No. CLD-HM104

## Description

|                         |   |
|-------------------------|---|
| <b>Source</b>           | Recombinant Human Claudin 4 Protein-VLP is expressed from HEK293.<br>It contains Met1-Val209. |
| <b>Accession</b>        | O14493  |
| <b>Molecular Weight</b> | The target protein has a predicted MW of 23.31 kDa.   |
| <b>Endotoxin</b>        | Less than 1EU per µg by the LAL method.   |
| <b>Purity</b>           | > 95% as determined by HPLC   |

## Formulation and Storage

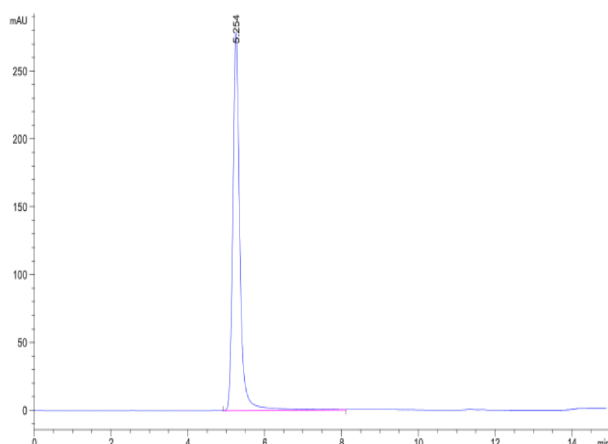
|                    |  |
|--------------------|--|
| <b>Formulation</b> | Supplied as 0.22µm filtered solution in PBS, 300mM L-Arginine (pH 7.4). <b>Notice:</b> If you need it for immunization, Do Not use any adjuvant.                                 |
| <b>Storage</b>     | Valid for 12 months from date of receipt when stored at -80°C. Recommend to aliquot the protein into smaller quantities for optimal storage. Please minimize freeze-thaw cycles. |

## Background

Claudin-4 (CLDN4) is a key component of tight junctions (TJs) in epithelial cells. CLDN4 is overexpressed in many epithelial malignancies and correlates with cancer progression. Changes in CLDN4 expression have been associated with epigenetic factors (such as hypomethylation of promoter DNA), inflammation associated with infection and cytokines, and growth factor signaling. CLDN4 helps to maintain the tumor microenvironment by forming TJs and acts as a barrier to the entry of anticancer drugs into tumors.

## Assay Data

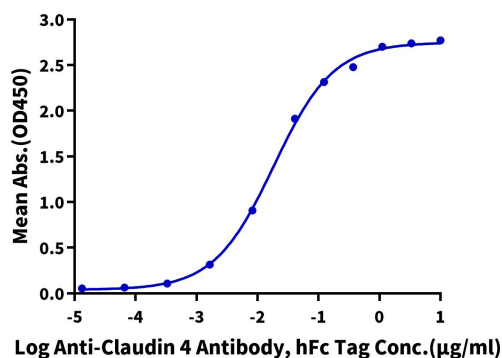
### SEC-HPLC



The purity of Human Claudin 4 VLP is greater than 95% as determined by SEC-HPLC.

### ELISA Data

**Human Claudin 4 VLP ELISA**  
0.1µg Human Claudin 4 Per Well



Immobilized Human Claudin 4 VLP at 1µg/ml (100µl/well) on the plate. Dose response curve for Anti-Claudin 4 Antibody, hFc Tag with the EC50 of 18.4ng/ml determined by ELISA.